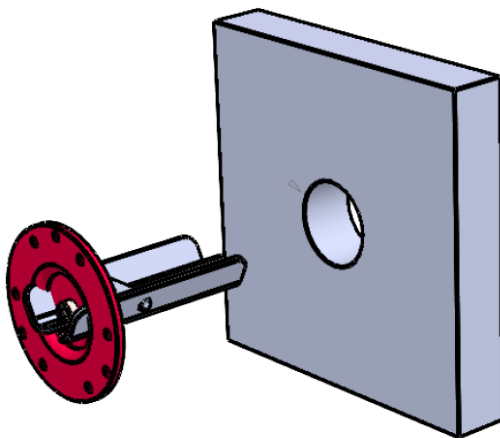


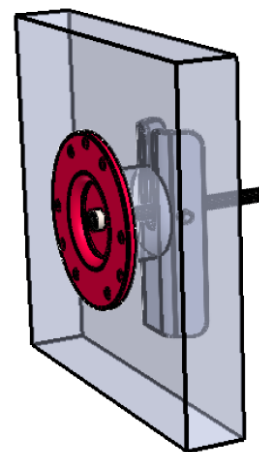
---

## Hollow Wall Anchor System

- Made from ultra-durable 304 stainless steel
- Designed to be used when no in-wall backing or wood stud is available for one or both ends when installing a grab bar
- Supports 400 lbs when used in 5/8" sheetrock only and 500 lbs when used with a wood stud.



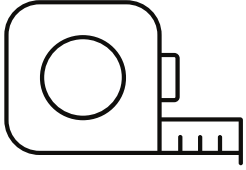
STEP 1



STEP 2

## Tools Needed for Installation:

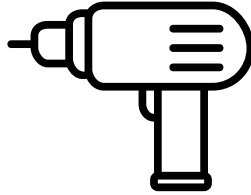
Tape Measure



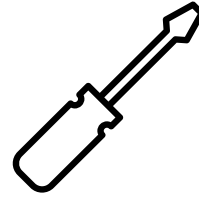
Pencil



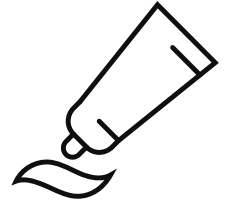
Drill with 1.5" Spade Bit or Hole Saw



Philips Head Screwdriver



Silicone Caulk



## Contents:

Part Description

Quantity (pcs)

Hex Wrench

1



3" Connection Bolts

2



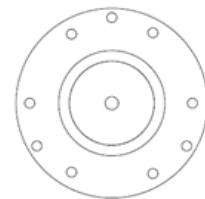
1/4" Screw

6



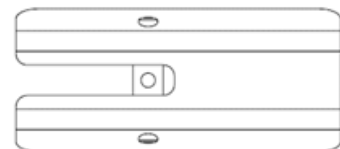
Flange Plate

2



Anchor Plate

2



**SAFETY NOTE: PERSONAL INJURY AND/OR PROPERTY DAMAGE MAY RESULT FROM IMPROPER WALL SUPPORT OR MOUNTING, WHICH IS NOT COVERED UNDER WARRANTY.**

**IT IS ESSENTIAL TO MARK THE SCREW HOLES ON THE MOUNTING PLATE AS WELL AS THE DISTANCE FROM THE MOUNTING PLATE TO THE FINISHED FLOOR TO ENSURE PROPER ALIGNMENT.**

#### INSTALLATION STEPS:

- Identify and mark your desired location for the grab bar.
- Measure desired height of the center of the grab bar and mark. Be sure to measure both ends of the bar from the tub or finished floor to ensure level installation.
- Using your 1.5" hole saw drill bit, drill through wall material in marked location. \*\*Note: be sure to check location of plumbing and electrical prior to drilling pilot holes. \*\*
- Unscrew the connection bolt from the anchor plate until it is fully extended but still connected.
- With the flat part of the anchor plate facing you, tilt the anchor plate so that it will fit through the pre-drilled pilot hole completed in step above.
- Feed the anchor through the wall until the anchor plate is fully inserted into the pilot hole and the plate can return to a perpendicular position.
- Begin slowly tightening the connection bolt to bring anchor plate and flange plate closer together.

- Tighten the connection bolt until the flange plate is touching the wall but do not securely fasten.
- Align the flange plate with the flange pattern on grab bar to ensure proper positioning of the flange plate.
- Once flange plate is properly aligned, fully tighten connection bolt to secure anchor and flange plates in place.
- Use 1/4" screws to install grab bar onto flange plate.
- If grab bar will be exposed to water, add bead of silicone caulk around flange plate of grab bar and twist on the flange cover. Wipe off any excess caulk.